

PREVECTRON®

Ion Discharge type



- ① Lower Electrods
- ② Triggering Device
- ③ Upper Electrodes
- ④ Central Pick-Up Rod
- ⑤ Protective Housing
- ⑥ Support Pole

Features

◆ Features of our prevectron 2 millenium indelec ese thunder protector

1. 5-model range offering customized solutions for each project
2. The solar panels supply power directly, the best power supply circuit without the battery
3. No additional maintenance, removed on a regular basis in order to replace the battery
4. Using life without being limited by the extra test circuit
5. Total reliability, even in extreme climatic conditions
6. Proven, robust design able to withstand multiple lightning strikes
7. Fully autonomous operation

◆ Product Specification / Models

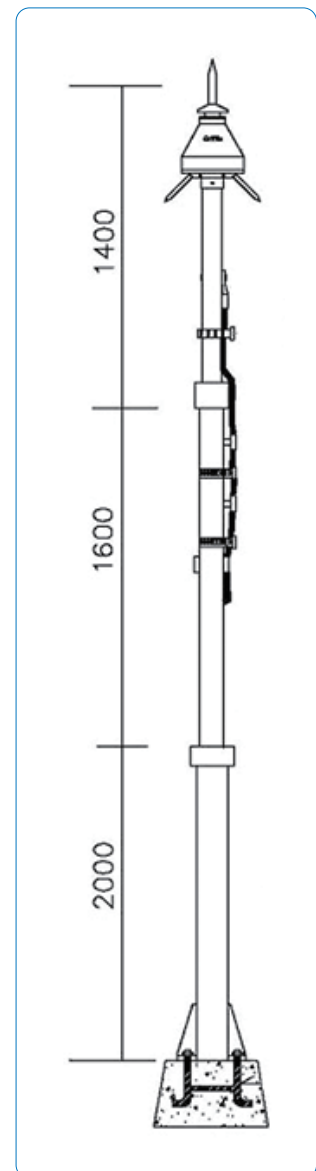
1. Material: stainless steel size: PREVECTRON® S 6,60 millenium – M20
2. T:60
3. Performance:
 - 1) No additional maintenance
 - 2) Using life without being limited by the extra test circuit
 - 3) Total reliability, even in extreme climatic conditions
 - 4) Proven, robust design able to withstand multiple lightning strikes

◆ Application / Models

- Application of prevectron 2 millenium indelec ese thunder protector
- Petrification storage, gas station, building construction, the beacon Taiwan, the communications station, observatory, military bases, the radar room, bank buildings(50*28*28)cm)

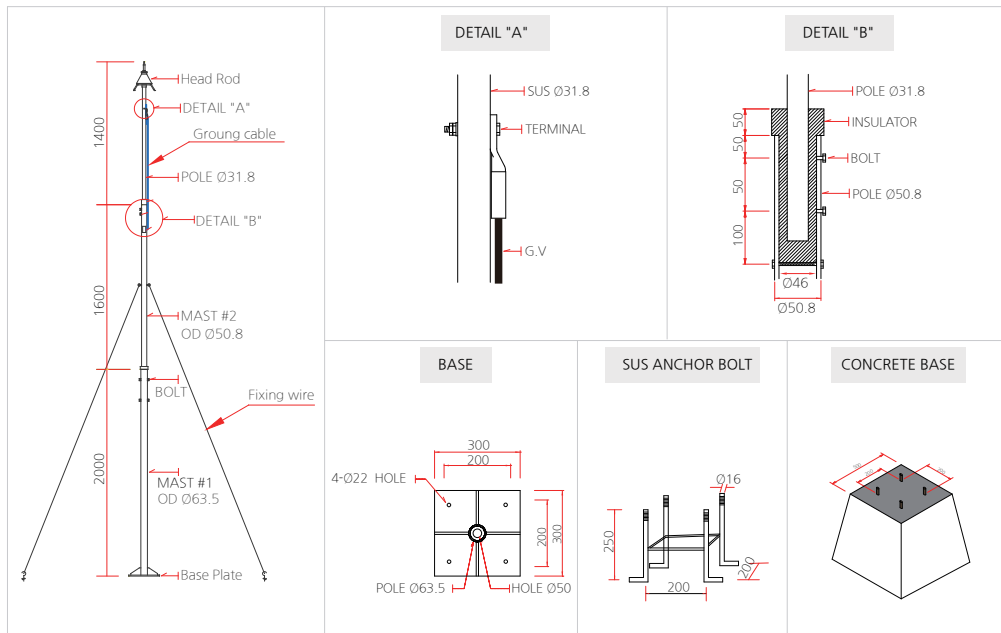
◆ Other Information

- Prevectron 2 millenium indelec ese thunder protector Installation, Usage and Maintenance
- The lightning rod should be installed on the top of the tower or other constructions. The angle of the lightning rod should be at least 1.5m higher than the highest protected target and the height of the tower should be increased according to the standard. Installation or Detection on thunderstorm day is forbidden.
- Periodically inspect the relative device (once per year), including the connection screw, the welded parts, grounding lead referrals, and grounding system. Reasonable maintenance should be taken if problem was found.



Protective radius of the PREVECTRON®

Protection Level	Model No.	Level 1 (NP1)			Level 2 (NP2)			Level 3 (NP3)		
		S 3.40	S 4.50	S 6.60	S 3.40	S 4.50	S 6.60	S 3.40	S 4.50	S 6.60
HIGHT	2	23	27	31	30	34	39	33	38	43
	3	35	41	47	45	52	58	50	57	64
	4	46	55	63	60	69	78	67	76	85
	5	58	68	79	75	87	97	84	95	107
	6	58	69	79	76	87	97	84	96	107
	10	59	69	79	77	88	99	87	98	109



EN 61643-1



PSE



HH05020-10001A



ISO 9001:2000



ISO 14001:2004



HEAD OFFICE

Add : 20280 S. Vermont Avenue, Suite 200, Torrance, CA 90502, USA

Tel : +1-310-532-8700

Fax : +1-310-532-8799

GM : Jace Park +1-213-924-3692

E-mail : pjc0723@hotmail.com

www.primepowersolutions.com